

OUTBOARD



INBOARD



## KE-4<sup>+</sup> ELECTRONIC CONTROL SYSTEM

FOR BOATS WITH MECHANICAL THROTTLE AND MECHANICAL SHIFT

### TECHNICAL DATA

The KE-4<sup>+</sup> is a perfect answer to smooth and easy shift and throttle control suitable for most applications. Modern styling, various color/finish control head options, single to quad engine capability. Designed specifically to meet the performance, reliability endurance and aesthetic requirements of today's modern boats.

SPECIFICATIONS			
Maximum work load	343N (35 kgf)	Driving current-motor	7A Max at 49N (5 Kgf)
Output speed	50mm per second	Shift travel	40mm Max each (Fwd, Rev) - adjustable
Rated input voltages	12V/24V DC common mode	Operating environment	-68°F/-20°C to +167°F/+75°C
Current consumption	0.5A Max (while not in use)	Throttle travel	80mm Max-adjustable
Starting current - motor	16A Max (49N (5 Kgf) load)		

ISSUE DATE JAN-10  
DATA SHEET NO.USA-EC1

### AT A GLANCE

#### FEATURES

- Designed for new installation or retrofit
- A new level of control performance for inboard, outboard or stern-drive engines; gas or diesel, 12V/24VDC common mode.
- Up to 4 stations
- Various color/finish control head options.
- Synchronization standard, 1 lever / 2 lever selection
- Neutral warm up function
- Complete self-diagnostic system
- Optional mechanical backup
- Adjustable shift pause and throttle delay
- Shift in gear protection
- Optional trolling system
- Remote hand held control optional. A great docking accessory
- Idle control option
- Optional outboard levers with ptt sw

PAGE 1 OF 3



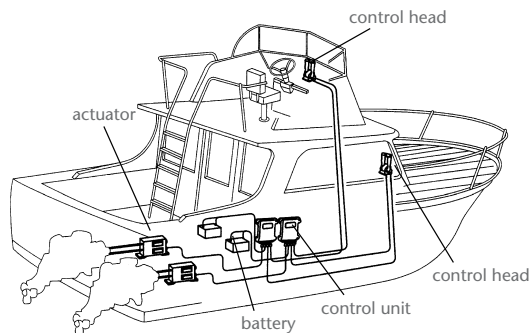
## AT A GLANCE

### FEATURES

- Settings tool option via external PC
- Single to quad engine capability

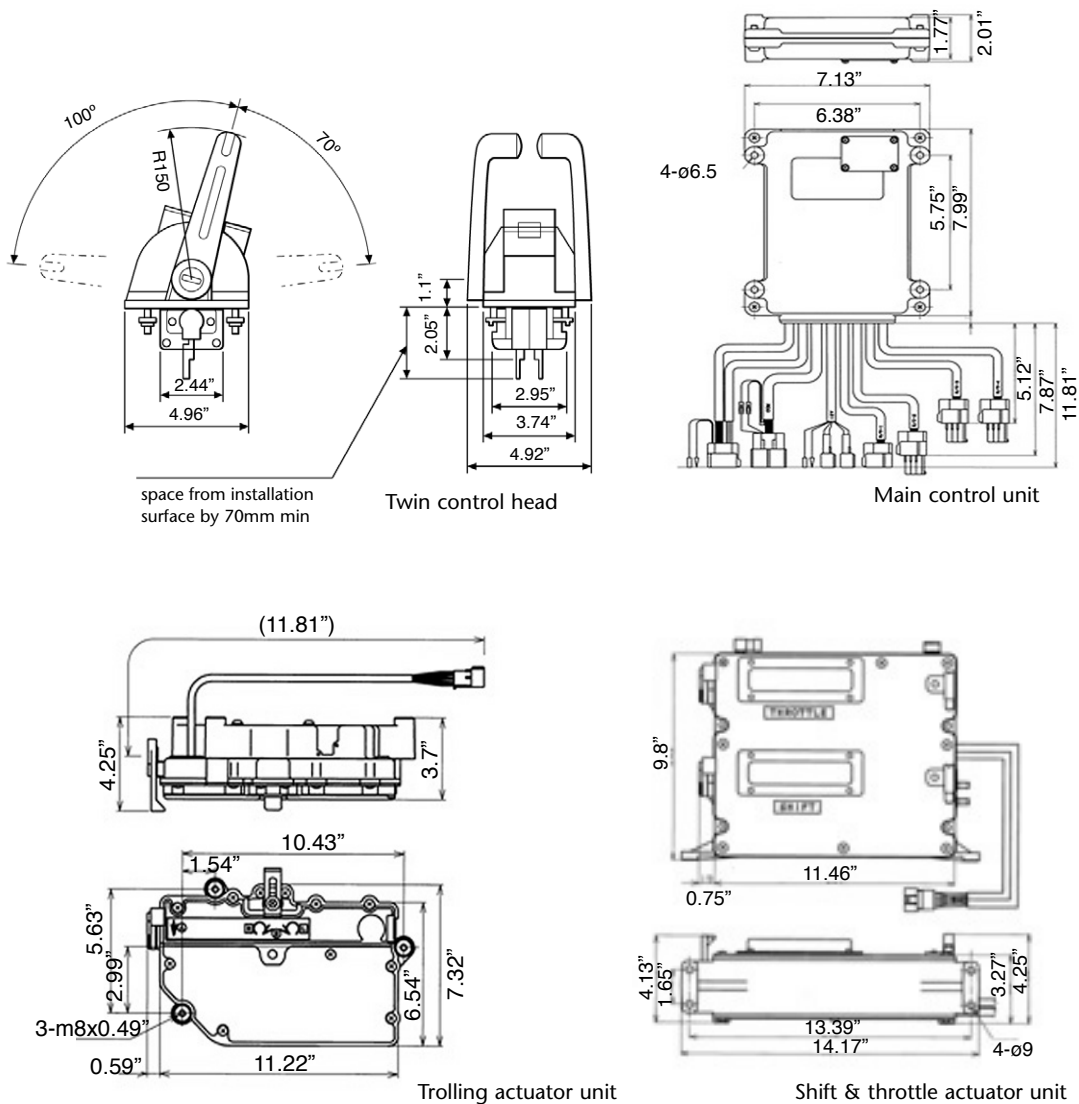


Twin control head



## KE-4+ ELECTRONIC CONTROL SYSTEM

### TECHNICAL DATA



## KE-4<sup>+</sup> ELECTRONIC CONTROL SYSTEM

ORDERING INFORMATION												
No	Name		Part No.	Required								Note
				Single Engine				Dual Engines				
				No. of Stations				No. of Stations				
				1st	2nd	3rd	4th	1st	2nd	3rd	4th	
1	Control head		SINGLE	1	2	3	4	-	-	-	-	
			DUAL	-	-	-	-	1	2	3	4	
2	Control unit 12V/24VDC		NM1475-00	1	1	1	1	2	2	2	2	
3	Actuator		NM0183-00	1	1	1	1	2	2	2	2	
4	Harness remote control	4m	NM0646-04	1	2	3	4	2	4	6	8	1m = 39 Inches
		6m	NM0646-06									
		8m	NM0646-08									
		10m	NM0646-10									
		12m	NM0646-12									
		14m	NM0646-14									
		16m	NM0646-16									
		18m	NM0646-18									
		20m	NM0646-20									
		22m	NM0646-22									
		24m	NM0646-24									
		26m	NM0646-26									
		28m	NM0646-28									
		30m	NM0646-30									
		32m	NM0646-32									
		34m	NM0646-34									
		36m	NM0646-36									
		38m	NM0646-38									
		40m	NM0646-40									
		50m	NM0646-50									
5	Harness power supply	5m 10m	NM0414-28 NM0414-33	2	2	2	2	4	4	4	4	
6	Bus Harness Bus Harness ext1 Bus Harness ext2		NM0647-O1 NM0647-O2 NM0647-O3									
7	Circuit breaker 20A		NJ0514-00	2	2	2	2	4	4	4	4	Recommended
8	Buzzer 24V model 12V model		NJ0515-00 NJ0596-00	1	2	3	4	2	4	6	8	Option
9	Cable		33C Style CCX633XX (TFXtreme)	2	2	2	2	4	4	4	4	Specify the length CCX633XX Recommended

XX = Length in feet

MECHANICAL BACK-UP OPTION											
10	Mechanical control head	Use standard control head	1	1	1	1	2	2	2	2	Option
11	Cable for manual operation	33C Style	2	2	2	2	4	4	4	4	Option Specify the length

1 meter = approx. 39 Inches

OPTION	PART NUMBER
Hand Held Remote Control	See Teleflex Marine website for hand held instruction manual

ISSUE DATE JAN-10  
DATA SHEET NO.USA-EC1

### AT A GLANCE

Triple and Quad engines  
ordering data available  
upon request.

PAGE 3 OF 3

