

ELETTROPOMPE AUTOADESCANTI A MEMBRANA ELECTRIC SELF PRIMING DIAPHRAGM PUMPS				
Tipo//Type	Kw	Prezzo // price €		
		12-24 volt c.c. 12-24 volt d.c.	230 monofase 230 single phase	230/400 trifase 230/400 three phase
JDREX S15	0,12	264	-	-
JDREX S40	0,20	407	465	465
PVM 0,16	0,20	559	-	-
PVM 0,2	0,26	710	821	821
PVM 0,5	0,37	1580	1322	1322
PVM 0,5 B	0,37	2007	1917	1917
PVM 1 R	0,37	2172	1598	1587
PVM 1	0,55	2775	1832	1764



ELETTROPOMPE AUTOADESCANTI MONOVITE ELECTRIC SELF PRIMING SINGLE SCREW				
Tipo//Type	Kw	Prezzo // price €		
		24 volt c.c. 24 volt d.c.	230 monofase 230 single phase	230/400 trifase 230/400 three phase
MS 5 BRONZO	0,37	1309	1208	1203
MS 15 BRONZO	1,10	2153	1903	1892
MS 20 BRONZO	1,50	2346	1961	1953



POMPE A MANO//HAND PUMPS			
TIPO//TYPE	FORMA//FORM	funzionamento//operation	€
YAKO ST/MA	ZZ	membrana/diaphragm	198
YAKO ST/MA	VV	membrana/diaphragm	198



SOLVER	SCHEMA A	pistone/piston	274
SOLVER	SCHEMA B	pistone/piston	351



WELOX 1/25	SCHEMA A	palette/vane	141
WELOX 1/25	SCHEMA B	palette/vane	217
WELOX 1/50	SCHEMA A	palette/vane	179
WELOX 1/50	SCHEMA B	palette/vane	255



EXCELSIOR 0	Bronzo//Bronze	semi-rotativa//semi-rotative	641
EXCELSIOR 1	Bronzo//Bronze	semi-rotativa//semi-rotative	775
EXCELSIOR 2	Bronzo//Bronze	semi-rotativa//semi-rotative	833
EXCELSIOR 3	Bronzo//Bronze	semi-rotativa//semi-rotative	1194
EXCELSIOR 4	Bronzo//Bronze	semi-rotativa//semi-rotative	1665
EXCELSIOR 5	Bronzo//Bronze	semi-rotativa//semi-rotative	1893

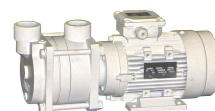
EXCELSIOR 0	Bronzo-ghisa //Bronze-cast iron	semi-rotativa//semi-rotative	180
EXCELSIOR 1	Bronzo-ghisa //Bronze-cast iron	semi-rotativa//semi-rotative	208
EXCELSIOR 2	Bronzo-ghisa //Bronze-cast iron	semi-rotativa//semi-rotative	261
EXCELSIOR 3	Bronzo-ghisa //Bronze-cast iron	semi-rotativa//semi-rotative	271
EXCELSIOR 4	Bronzo-ghisa //Bronze-cast iron	semi-rotativa//semi-rotative	318
EXCELSIOR 5	Bronzo-ghisa //Bronze-cast iron	semi-rotativa//semi-rotative	568



ELETTROPOMPE CENTRIFUGHE AUTOADESCANTI ELECTRIC SELF PRIMING CENTRIFUGAL PUMPS				
Tipo//Type	Kw	Prezzo // price €		
		12-24 volt c.c.	230 monofase	230/400 trifase
		12-24 volt d.c.	230 single phase	230/400 three phase
A60 B	0,25	557	586	586
A80 B	0,37	706	647	647
A90 B	0,60	832	825	825
A990 B	0,37	731	590	590
A990 BR	0,45	811	706	706
A992 I	0,37	649	359	359
A992 IR	0,45	698	382	382
A993 I	0,55	729	423	423
A994 I	0,75	761	458	458
A995 I	1,10	1125	798	798
A993 B	0,55	1323	1274	1274
A994 B	0,75	1408	1329	1329
A995 B	1,10	2142	1791	1791
A996 B	1,10	on request	1840	1840
A997 B	2,20	on request	1857	1857
T68B	0,45	812	550	550
T78B	0,50	977	787	787
C 16B	0,20	663	596	596
C 20B	0,37	898	644	644
C 22B	0,55	887	682	682
C 24B	0,75	984	813	813
C 41B	1,10	2051	1105	1105



ELETTROPOMPE MULTISTADIO AUTOADESCANTI ELECTRIC SELF PRIMING MULTICELLULARS PUMPS				
Tipo//Type	Kw	Prezzo // price €		
		12-24 volt c.c.	230 monofase	230/400 trifase
		12-24 volt d.c.	230 single phase	230/400 three phase
TSL 12/25	0,30	512	490	490
TSL 24/25	0,40	759	625	625
TSL 24/28	0,60	845	796	796
TSL 24/40	0,80	1466	913	913
TSL 24/50	1,50	1722	1029	1029
TSL 20/1	0,70	1559	1363	1328
TSL 23/1	1,10	1953	1609	1560
TSL 23/2	1,50	2253	1964	1907
TSL 24/1	2,20	2317	1825	1768
TSL 24/2	4,00	on request	on request	2138
TSL 25/1	4,00	on request	on request	2600
AT 3/1	1,00	3090	-	-
AT 3/2	2,20	3440	2928	2898
AT 3/11	1,60	3242	2599	2499
AT 3/12	1,60	3568	3077	3043
AT 3/13	3,00	3921	3207	3173
AT 4/1	2,20	3929	3357	3283
AT 4/2	4,00	on request	on request	3913
AT 4/3	5,50	on request	on request	on request
AT 5/1	4,00	on request	on request	4069
AT 5/2	11,00	-	-	5256
AT 5/3	15,00	on request	on request	on request
AT 6/1	7,50	-	-	5734
AT 6/2	11,00	-	-	6369
AT 6/3	18,50	-	-	8516
VA 40 B	0,75	1842	1560	1514
VA 42 B	2,20	on request	on request	on request
VA 43 B	3,00	on request	on request	on request
VA 50 B	5,50	on request	on request	on request



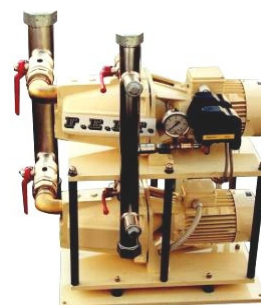
AUTOCLAVI CON ELETTROPOMPE CENTRIFUGHE AUTOADESCANTI WATER PRESSURE SYSTEM WITH ELECTRIC SELF PRIMING CENTRIFUGAL PUMPS				
Tipo//Type	Kw	Prezzo // price €		
		12-24 volt c.c.		230/400 trifase
		12-24 volt d.c.	230 single phase	230/400 three phase
AM60 B	0,25	631	717	717
AM60 B/2 inox	0,25	693	779	779
AM60/8 B	0,25	744	795	795
AM80 B	0,37	841	890	890
AM80/5 B	0,37	853	901	901
AM90 B	0,60	on request	on request	on request
AM990BSP12E	0,37	1038	946	946
AM990BRSP12E	0,45	1081	974	974
AM992ISP12E	0,37	862	662	662
AM992IRSP12E	0,45	910	729	729
AM994BSP12E	0,75	1844	1528	1528
AM995BSP12E	1,10	3008	2341	2341
AM990BSP24	0,37	1049	959	959
AM990BRSP24	0,45	1129	983	983
AM992ISP24	0,37	910	679	679
AM992IRSP24	0,45	927	706	706
AM994BSP24	0,75	1858	1540	1540
AM995BSP24	1,10	3023	2356	2356
AM990B/5	0,37	1026	922	922
AM990BR/5	0,45	1077	959	959
AM990 B	0,37	1029	959	959
AM990 BR	0,45	1075	1031	1031
AM992 I	0,37	990	765	765
AM992 IR	0,45	1021	789	789
AM993 B	0,55	1544	1347	1347
AM994 B	0,75	1633	1372	1372
AM995 B	1,10	2327	1947	1947
AM996 B	1,10	2351	1972	1972
AM997 B	2,20	-	on request	2131



WATER CONTROL QDCE				
Tipo//Type	Kw	Prezzo // price €		
		rpm		12-24 volt d.c.
		rpm		12-24 volt d.c.
AM992I QDCE	0,37	500-2950	1031	
AM992IR QDCE	0,45	500-2950	1087	
AM993I QDCE	0,55	500-2950	1257	
AM990B QDCE	0,37	500-2950	1177	
AM990BR QDCE	0,45	500-2950	1243	
AM993B QDCE	0,55	500-2950	1980	
AM994B QDCE	0,75	500-2950	2013	
AM995B QDCE	1,10	500-2950	on request	
AM996B QDCE	1,10	500-2950	on request	



AUTOCLAVI CON 2 ELETTROPOMPE CENTRIFUGHE AUTOADESCANTI WATER PRESSURE SYSTEM WITH 2 ELECTRIC SELF PRIMING CENTRIFUGAL PUMPS				
Tipo/Type	esecuzione execution	Prezzo // price €		
		12-24 volt c.c. 12-24 volt d.c.	230 monofase 230 single phase	230/400 trifase 230/400 three phase
AM990BDSP12E	oz	2441	2126	2126
AM990BDSP12E	ve	2470	2153	2153
AM990BDRSP12E	oz	2722	2318	2318
AM990BDRSP12E	ve	2922	2346	2346
AM992IDSP12E	oz	2153	1622	1622
AM992IDSP12E	ve	2182	1649	1649
AM992IDRSP12E	oz	2244	1813	1813
AM992IDRSP12E	ve	2370	1918	1918
AM993BDSP12E	oz	4547	3846	3846
AM993BDSP12E	ve	4730	4030	4030
AM993IDSP12E	oz	2712	1908	1908
AM993IDSP12E	ve	2738	1934	1934
AM994BDSP12E	oz	4547	3893	3893
AM994BDSP12E	ve	4730	4099	4099
AM995BDSP12E	oz	6687	5003	5003
AM995BDSP12E	ve	7088	5351	5351
AM990BDSP24	oz	2496	2189	2189
AM990BRDSP24	oz	2617	2352	2352
AM992IDSP24	oz	2216	1701	1701
AM992IRDSP24	oz	2547	1886	1886
AM993BDSP24	oz	4719	3861	3861
AM993IDSP24	oz	2849	2026	2026
AM994BDSP24	oz	4755	3878	3878
AM995BDSP24	oz	6815	5131	5131
AM990BD	oz	2493	2153	2153
AM990BD	ve	2675	2287	2287
AM990BRD	oz	2590	2323	2323
AM990BRD	ve	2717	2426	2426
AM992ID	oz	2062	1642	1642
AM992ID	ve	2342	2042	2042
AM992IRD	oz	2182	1801	1801
AM992IRD	ve	2522	2201	2201
AM993BD	oz	4463	3575	3575
AM993BD	ve	4650	3762	3762
AM994BD	oz	4463	3575	3575
AM994BD	ve	4650	3762	3762
AM995BD	oz	4592	4040	4040
AM995BD	ve	4722	4273	4273
AM996BD	oz	4736	4102	4102
AM996BD	ve	4864	4343	4343
AM997BD	oz	5511	4395	4395
AM997BD	ve	5745	5327	5327



AUTOCLAVI CON 2 ELETTROPOMPE CENTRIFUGHE AUTOADESCANTI QDCE WATER PRESSURE SYSTEM WITH 2 ELECTRIC SELF PRIMING CENTRIFUGAL PUMPS QDCE				
Tipo/Type	esecuzione execution	Prezzo // price €		
		24 volt c.c. 24 volt d.c.	24V + 230V monofase 24V + 230 single phase	24V + 230/400V 24V + 230/400V
AM992IDQDCE	oz	2431	1921	1947
AM992IDQDCE	ve	2481	1944	1971
AM992IRDQDCE	oz	2431	2009	1947
AM992IRDQDCE	ve	2481	2032	1971
AM993IDQDCE	oz	3203	2607	2680
AM993IDQDCE	ve	3393	2794	2867
AM990BDQDCE	oz	2706	2295	2219
AM990BDQDCE	ve	2748	2303	2241
AM990BRDQDCE	oz	2733	2280	2219
AM990BRDQDCE	ve	2748	2303	2241
AM993BDQDCE	oz	4788	4208	4201
AM993BDQDCE	ve	4969	4389	4382
AM994BDQDCE	oz	5040	4430	4421
AM994BDQDCE	ve	5230	4620	4613



AUTOCLAVI CON ELETTROPOMPE A MEMBRANA AUTOADESCANTI WATER PRESSURE SYSTEM WITH ELECTRIC SELF PRIMING DIAPHRAGM PUMPS				
Tipo/Type	Kw	Prezzo // price €		
		12-24 volt c.c.	230 monofase	230/400 trifase
		12-24 volt d.c.	230 single phase	230/400 three phase
AM20	0,12	302	-	-
AM20/2	0,14	379	-	-
AM30	0,20	459	528	528
AM30/2	0,20	506	589	589
KIT ANTIVIBRANTI SILENT BLOCK		40		



ELETTROPOMPE SOMMERSIBILI SUBMERSIBLE ELECTRIC PUMPS				
Tipo/Type	Kw	Prezzo // price €		
		12-24 volt c.c.	230 monofase	230/400 trifase
		12-24 volt d.c.	230 single phase	230/400 three phase
MP15	0,20	143	-	-
MP20	0,25	189	-	-
MP37	0,30	362	-	-
MT150	0,30	973	-	479
MT151	0,35	987	491	491
MT151A	0,40	998	504	510



ELETTROPOMPE VERTICALI VERTICAL ELECTRIC PUMPS				
Tipo/Type	Kw	Prezzo // price €		
		12-24 volt c.c.	230 monofase	230/400 trifase
		12-24 volt d.c.	230 single phase	230/400 three phase
VZF 50	0,37	3368	3122	3122
VZF 75	0,55	3490	3244	3244
VZF 100	0,88	3387	2296	2296
VZF 150	1,10	4139	3001	3001
VZF 200	1,50	4592	3124	3124



A RICHIESTA ESECUZIONI IN GHISA O ACCIAIO INOX  
EXECUTION IN CAST IRON OR STAINLESS STEEL ON REQUEST

ELETTROPOMPE MONOBLOCCO AD INGRANAGGI CLOSE COUPLED GEAR PUMPS				
Tipo/Type	Kw	Prezzo // price €		
		12-24 volt c.c.	230 monofase	230/400 trifase
		12-24 volt d.c.	230 single phase	230/400 three phase
GR2B	0,10	778	691	691
GR3B	0,13	795	712	712
GR4B	0,18	851	725	725
GR5B	0,25	1091	866	866
GR10B	0,37	1124	945	945
GR15B	0,55	1460	975	975
GR25/20B	0,75	1492	1003	1003
GR35B	1,10	2119	1194	1194
GR50B	1,50	-	1450	1450
GR60B	1,90	-	1674	1674



A RICHIESTA ESECUZIONI IN GHISA O ACCIAIO INOX  
EXECUTION IN CAST IRON OR STAINLESS STEEL ON REQUEST

POMPE AUTODESCANTI CONPULEGGIA				
SELF PRIMING PUMPS WITH PULLEY				
Tipo/Type	esecuzione execution	Puleggia/Pulley	frizione meccanica mechanical clutch	frizione elettrica electric clutch
I20AN	bronzo/bronze	302	-	-
I25AN	bronzo/bronze	411	433	615
I30AN	bronzo/bronze	491	516	747
I35AN	bronzo/bronze	502	528	798
I40AN	bronzo/bronze	523	550	780
I50AN	bronzo/bronze	739	778	949
S25AN	aisi316	799	840	986
S40AN	aisi316	1001	1055	1243
S50AN	aisi316	1352	1424	1547
CM40	bronzo/bronze		1881	
CM40FD	bronzo/bronze+ frizione/friction		2511	
CM50	bronzo/bronze		2225	
CM50FD	bronzo/bronze+ frizione/friction		2871	



MOTOPOMPE DIESEL				
DIESEL ENGINE PUMPS				
Tipo/Type	Kw	Prezzo // price €		
V40TSLD	6,00		4967	
V50TSLD	6,00		5082	
V2XRD	3,00		on request	
V3XRD	4,70		on request	
V4XRD	6,60		on request	
V4XRRD	10,30		on request	
VTA 401	3,00		7364	
VTA 402	6,00		8424	
VTA 501	9,00		9761	
VTA 502	9,00		on request	
VTA 503	12,00		on request	



SERRANDE A PALE MULTIPLE							
FUME EXHAUST DAMPERS MULTI-BLADE MODELS							
	200	300	400	500	600	700	800
200	202	216	223	244	267	290	328
300	216	233	244	268	289	301	341
400	237	256	267	291	312	311	352
500	264	277	289	304	347	347	393
600	283	300	312	324	370	370	421
700	296	321	346	358	377	382	428
800	337	343	368	377	401	420	443
ATTUATORE PNEUMATICO	PNEUMATIC ATTUATOR		197				
ATTUATORE ELETTRICO	ELECTRIC ATTUATOR		531				

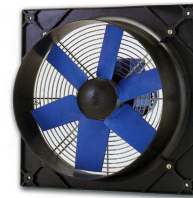


VENTILATORI ASSIALI				
AXIAL FANS				
Tipo//Type	Kw	Prezzo // price €		
		12-24 volt c.c.	230 monofase	230/400 trifase
		12-24 volt d.c.	230 single phase	230/400 three phase
250	0,15	592	-	-
250/2S	0,25	603	-	-
250/2R	0,37	740	-	-
315/2	0,25	768	-	-
315/4	0,15	729	-	-
315/2S	0,37	786	-	-
350/4	0,25	768	-	-
350/2	0,37	920	-	-
400/2	0,75	937	-	-
400/4	0,37	850	-	-
450/2	0,75	920	-	-
450/4	0,37	835	-	-
450/R	0,55	867	-	-
500	0,55	928	-	-
500/S	0,75	962	-	-
560	0,75	1214	-	-
560/S	1,10	1271	-	-
600	1,10	1329	-	-
630	0,75	1323	-	-
250	0,12	-	519	508
250/2S	0,25	-	537	521
250/2R	0,37	-	582	537
315/2	0,25	-	587	546
315/4	0,25	-	587	578
315/2S	0,37	-	601	590
350/4S	0,25	-	666	654
350/R	0,55	-	675	667
400/2	1,10	-	757	740
400/4	0,37	-	624	607
450/2	2,20	-	920	798
450/4	0,37	-	682	676
450/R	0,55	-	706	693
500	0,55	-	718	706
500/S	0,75	-	752	740
560	0,75	-	786	775
560/S	1,10	-	844	823
600	1,10	-	886	865
630	0,75	-	838	827
714	2,20	-	1207	1043
714/S	3,00	-	-	1276
800	4,00	-	-	1690
800/S	5,50	-	-	1784
900	5,50	-	-	1916
900/S	7,50	-	-	2136
1000	5,50	-	-	1953
1000/S	7,50	-	-	2253



ACCESSORI PER VENTILATORI ASSIALI			
ACCESSORIES FOR AXIAL FANS			
Tipo//Type	ANELLO ANTIVIBRANTE	FLANGIA TONDO QUADRO	SILENZIATORE
	NO VIBRATION RING	FLANGE ROUND SQUARE	SILENCER
250	109	104	on request
300	110	105	on request
315	117	110	on request
350	142	138	on request
400	162	149	on request
450	175	156	on request
500	189	169	on request
560	198	182	on request
600	220	201	on request
714	240	223	on request
800	252	234	on request
900	297	279	on request
1000	311	285	on request

VENTILATORI ASSIALIFV/PL					
AXIAL FANS FV/PL					
FV / PL	Kw	Prezzo // price €			
		12-24 volt c.c.		230 monofase	230/400 trifase
Tipologia/Type		12-24 volt d.c.		230 single phase	230/400 three phase
250	0,15	475	173	-	173
250/2S	0,25	480	173	-	173
250/2R	0,37	636	173	-	173
315/2	0,25	624	-	-	-
315/4	0,15	613	-	-	-
315/2S	0,37	646	-	-	-
350/4	0,25	659	-	-	-
350/2	0,37	729	-	-	-
400/2	0,75	744	-	-	-
400/4	0,37	670	-	-	-
450/2	0,75	789	-	-	-
450/4	0,37	729	-	-	-
450/R	0,55	752	-	-	-
500	0,55	811	-	-	-
500/S	0,75	913	-	-	-
560	0,75	1164	-	-	-
560/S	1,10	1278	-	-	-
600	1,10	1349	-	-	-
630	0,75	1265	-	-	-
250	0,12	-	456	444	-
250/2S	0,25	-	468	457	-
315/4	0,25	-	503	491	-
350/4S	0,25	-	506	494	-
400/4	0,37	-	510	501	-
450/4	0,37	-	556	546	-
450/R	0,55	-	607	597	-
500	0,55	-	663	653	-
500/S	0,75	-	687	675	-
560	0,75	-	775	768	-
560/S	1,10	-	803	791	-
600	1,10	-	844	827	-
630	0,75	-	814	803	-
714	2,20	-	1036	1021	-
714/S	3,00	-	-	on request	-
800	4,00	-	-	on request	-
800/S	5,50	-	-	on request	-
900	5,50	-	-	on request	-
900/S	7,50	-	-	on request	-
1000	5,50	-	-	on request	-
1000/S	7,50	-	-	on request	-





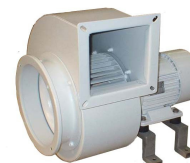
VENTILATORI ASSIALI FVSA/FESA AXIAL FAN FVSA/FESA			
Tipo//Type	Kw	volt	Prezzo // price €
FVSA16712	V	12	140
FESA16712	E	12	140
FVSA16724	V	24	140
FESA16724	E	24	140
FVSA19012	V	12	124
FESA19012	E	12	124
FVSA19024	V	24	143
FESA19024	E	24	143
FVSA22512	V	12	124
FESA22512	E	12	124
FVSA22524	V	24	143
FESA22524	E	24	143
FVSA25512	V	12	156
FESA25512	E	12	156
FVSA25524	V	24	143
FESA25524	E	24	143
FVSA28012	V	12	124
FESA28012	E	12	124
FVSA28024	V	24	143
FESA28024	E	24	143
FVSA30512	V	12	130
FESA30512	E	12	130
FVSA30524	V	24	236
FESA30524	E	24	236
FVSA33012	V	12	130
FESA33012	E	12	130
FVSA33024	V	24	236
FESA33024	E	24	236
FVSA35012	V	12	180
FESA35012	E	12	180
FVSA35024	V	24	236
FESA35024	E	24	236
FVSA38512	V	12	277
FESA38512	E	12	277
FESA38524	V	24	on request
FESA38524	E	24	on request



VENTILATORI CENTRIFUGHI ZA CENTRIFUGAL BLOWERS ZA				
Tipo/Type	Kw	Prezzo // price €		
		12-24 volt c.c.	230 monofase	230/400 trifase
		12-24 volt d.c.	230 single phase	230/400 three phase
ZA202	0,09	237	292	292
ZA252	0,09	316	321	321
ZA302	0,18	344	335	335
ZA402	0,25	358	406	406
ZA502	0,37	558	535	535
ZA552	0,55	582	553	553
ZA602	1,10	959	708	708
ZA504	0,12	498	440	440
ZA554	0,18	510	503	503
ZA604	0,25	594	546	546
ZA654	0,37	940	803	803
ZA652	1,50	1279	973	973
ZA704	1,10	1204	1059	1059
ZA754	1,50	1504	1140	1140



VENTILATORI CENTRIFUGHI ZR CENTRIFUGAL BLOWER ZR				
Tipo/Type	Kw	Prezzo // price €		
		12-24 volt c.c.	230 monofase	230/400 trifase
		12-24 volt d.c.	230 single phase	230/400 three phase
ZR311	2,20	-	1777	1741
ZR351	3,00	-	-	2038
ZR401	4,00	-	-	2362
ZR402	5,50	-	-	2615
ZR451	7,50	-	-	3079
ZR452	11,00	-	-	4358
ZR312	0,18	1647	1515	1479
ZR352	0,37	2247	1711	1674
ZR403	0,55	2479	1950	1913
ZR453	0,75	2867	2191	2154
ZR454	1,10	2924	2247	2223
ZR503	1,50	3328	2622	2584
ZR504	2,20	-	2731	2694
ZR561	3,00	-	-	3209
ZR562	4,00	-	-	3365
ZR631	5,50	-	-	4092
ZR632	7,50	-	-	4350
ZR505	0,37	2882	2380	2471
ZR506	0,55	2918	2449	2510
ZR563	0,75	3501	2992	2979
ZR564	1,10	-	3220	3061
ZR633	1,50	-	3629	3690
ZR634	2,20	-	3806	3822
ZR713	3,00	-	-	4650
ZR714	4,00	-	-	4880



VENTILATORI CENTRIFUGHI ZB				
CENTRIFUGAL BLOWER ZB				
Tipo/Type	Kw	Prezzo // price €		
		12-24 volt c.c.	230 monofase	230/400 trifase
		12-24 volt d.c.	230 single phase	230/400 three phase
ZB182	0,55	1034	841	840
ZB183	1,10	1302	930	926
ZB202	0,75	1080	907	895
ZB203	1,10	1347	984	973
ZB222	1,50	1433	1147	1098
ZB223	2,20	1470	1209	1199
ZB252	3,00	-	-	1339
ZB253	4,00	-	-	1430
ZB282	5,50	-	-	1777
ZB283	9,20	781	-	2215
ZB225	0,37	1153	1023	949
ZB254	0,55	1281	1106	1028
ZB284	0,75	1457	1360	1219
ZB285	1,10	1738	1446	1309
ZB314	1,10	2019	1726	1590
ZB315	1,50	2059	1786	1648
ZB354	2,20	2325	2071	2011
ZB355	3,00	-	-	2074
ZB404	4,00	-	-	2411
ZB405	5,50	-	-	2558
ZB454	7,50	-	-	3621
ZB455	9,20	-	-	3797
ZB316	0,37	1668	-	1527
ZB317	0,55	1738	-	1543
ZB356	0,75	2400	-	1863
ZB357	1,10	2285	-	1965
ZB406	1,50	2558	-	2276
ZB407	2,20	0	-	2422
ZB456	3,00	0	-	3313
ZB457	4,00	0	-	3515



SERBATOI IN ACCIAIO INOX				
STAINLESS STEEL WATER TANKS				
Tipo/Type	Capacità Capacity	Prezzo €	Dimensioni HxL	Raccordo
		Price €	Dimensions HxL	Connector
2	2	159	125x237	3/4"
20	20	237	275x490	1"
60	50	614	450x545	1"
100	100	on request	525x745	1"

SERBATOI CON FLANGIA INOX				
TANK WITH STAINLESS STEEL FLANGE				
Tipo/Type	Capacità Capacity	Prezzo €	Dimensioni HxL	Raccordo
		Price €	Dimensions HxL	Connector
2	2	41	125x237	3/4"
5	5	47	160x332	1"
8	8	52	200x348	1"
20	20	63	274x497	1"
60	200	on request	412x649	1"1/2
100	300	on request	484x756	1"1/2



CIRCOLATORI				
CIRCULATORS				
Tipo/Type	W	Prezzo // price €		
		230 monofase	230/400 trifase	Raccordo
		230 single phase	230/400 three phase	Connector
10 B	10	394	-	1/2"
20 B	20	475	-	1/2"
35 B	35	515	1149	3/4"1"1/4
50 B	50	680	2429	1"1/4
100B	100	801	3163	1"1/2



BOILER				
Tipo//Type	Kw	Prezzo // price €		
		Litri Litres	230 monofase 230 single phase	230/400 trifase 230/400 three phase
TR 22	1,20	22	833	-
TR 30	1,20	30	934	-
TR 45	1,20	45	1092	-
TR 60	1,20	60	1150	-
TR 80	3,00	80	2010	2299
TR100	3,00	100	2068	2357
TR150	3,00	150	3057	3243



MANOMETRI IN ACCIAIO INOX PRESSURE GAUGE IN STAINLESS STEEL		
Tipo//Type	BAR	Prezzo // price €
S2	0-2,5	19
S4	0-4	19
S6	0-6	19
S10	0-10	19
S12	0-12	19
S16	0-16	19
S20	0-20	24
S25	0-25	24



PRESSOSTATI PRESSURE SWITCHES		
Tipo//Type	BAR	Prezzo // price €
P5	0,5-5	21
P10	3,0-12	29



PRESSOSTATI DI SICUREZZA SAFETY PRESSURE SWITCHES		
Tipo//Type	BAR	Prezzo // price €
SP5	0,05-0,4	50
SP12E	1-3,5	106
SP12EM	1-3,5	121
SP24	1-3,5	162



SP5  
SP5

SP 12 E  
SP 12 E

SP24

RACCORDI PER AUTOCLAVI BRASS FITTINGS FOR WATER PRESSURE SYSTEM		
Tipo//Type	Lunghezza length	Prezzo // price €
R71	71,5	15
R82	82	19
R91	91	22



VALVOLE/VALVES		
Tipo//Type	F	Prezzo // price €
V1/2	1/2"	9
V3/4	3/4"	9
V1	1"	9
V1 1/4	1" 1/4	16
V 11/2	1" 1/2	22

VALVOLE DI FONDO /FOOT VALVES		
Tipo//Type	F	Prezzo // price €
VF1/2	1/2"	10
VF3/4	3/4"	13
VF1	1"	15
VF1 1/4	1" 1/4	19
VF11/2	1" 1/2	31

